

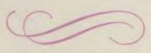
Dr. Schmidt - Foreman
Fischer & Frichtel

FISCHER & FRICHEL Construction Company was established in 1946 and incorporated in 1948 by young men who believed in progress and in the comfort and livability of contemporary architecture. We believed that the trend to smaller and smaller rooms should be halted, and that radiant heat made a home without a basement, and with larger living space comfortable and desirable.

Since that time until September of 1955, we have built over 1100 homes of this style, and they have been overwhelmingly accepted and are now becoming more saleable than old-fashioned construction.

FISCHER & FRICHEL, INC. have always taken a great deal of pride in the quality of materials and workmanship incorporated in their homes and especially in the fine finishing of all homes, regardless of price. We believe that this finishing cannot be equaled in the same price class anywhere in the St. Louis area. You are invited to make your own inspection of our homes to verify this.

We have endeavored always to increase the quality and livability of our homes rather than to provide "fancy gadgets". The worth of these policies has been proven by the greater resale value of FISCHER & FRICHEL, INC. homes.



Harry S. Surkamp Investment Co.

The Harry S. Surkamp Investment Company, organized in 1899, is an approved lending agency under the Federal Housing Administration. They have financed FISCHER & FRICHEL, INC. subdivisions since 1947, and their more than fifty years experience in lending on residential properties insures BARRETT BRAE home buyers courteous, efficient and honest service.



The display home was furnished and decorated by MODERN INTERIORS, one of St. Louis's foremost contemporary furniture houses handling a large selection of modern furniture. Among which are the collections of Paul McCobb and Milo Baughman.

Ralph Schmitzer
001-4788

Barrett Brae
IN KIRKWOOD

47-8640
Harmon
8820 Gravois
8820 Gravois



YOUR DOORWAY
to *Distinction*

Modern Styling for Today's Living

1500
14

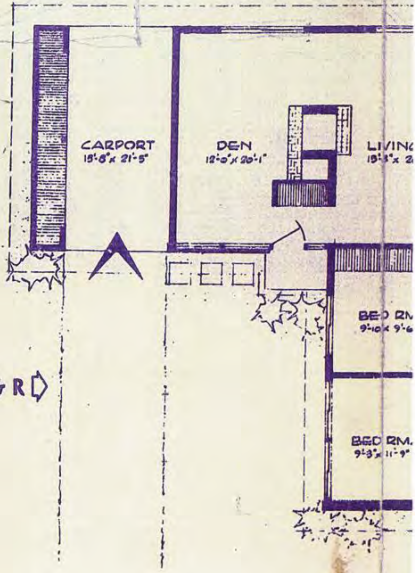
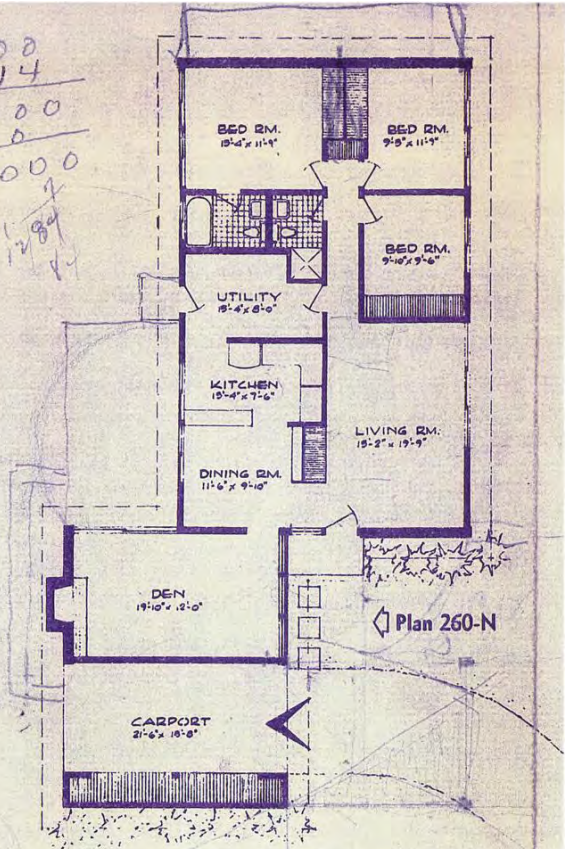
6000
1500

21000

One hundred and five years ago, James Pugh Kirkwood, a Scottish engineer, was commissioned to lay out the town. He did such a good job, the town was named after him, and a tradition—a tradition of good living—was born. The growth and development of Kirkwood through these many years has strengthened that tradition. The rolling ground, the stately trees attracted many, and the lovely mansions of Kirkwood are part of its tradition.

A changing economy has today made the building of mansions impractical, but modern engineering with modern styling has evolved a type of housing which retains much of the spaciousness and grace of living of the old-time mansions. Such are the houses of BARRETT BRAE. The rolling ground, the stately trees are the same and to the tradition of good living that is Kirkwood has been brought the tradition of FISCHER & FRICHTEL—quality construction with modern styling.

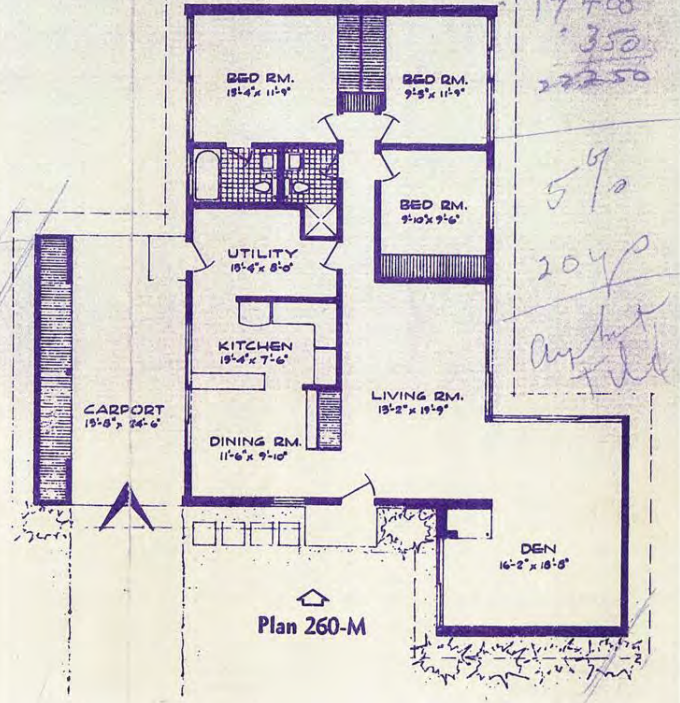
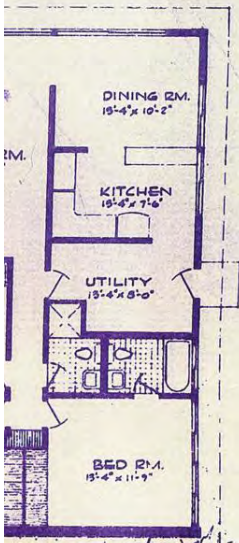
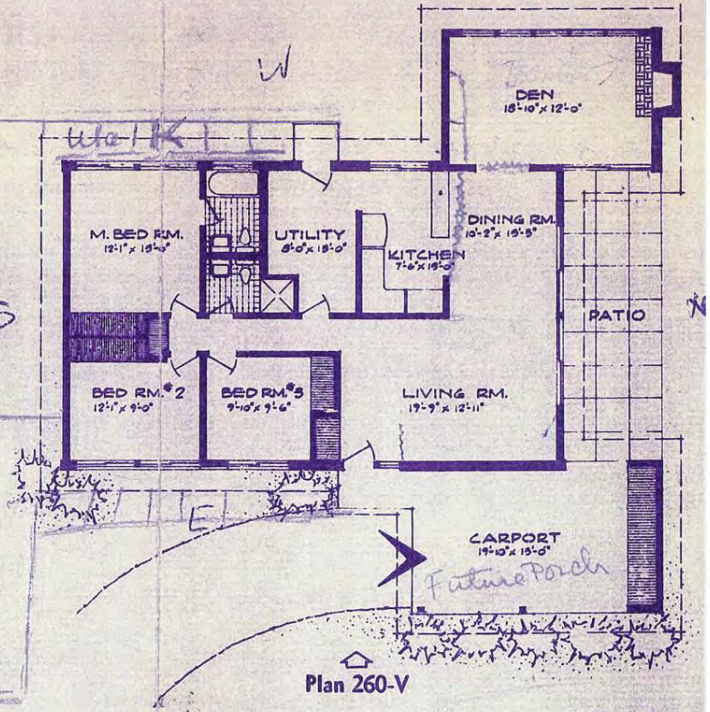
The tradition of FISCHER & FRICHTEL is newer than that of Kirkwood, but no less firmly established. From the time ten years ago when they built their first houses, it has grown with the development of their many subdivisions, among which are Maryknoll and Engler Acres in St. John, Champlain in Florissant, Frostwood in Berkeley, Heather Hill in Olivette and North Oaks in Kansas City, Missouri. BARRETT BRAE is the latest in this long line of developments and we feel it will be as well received.



Our Plan No. 260 with Den,

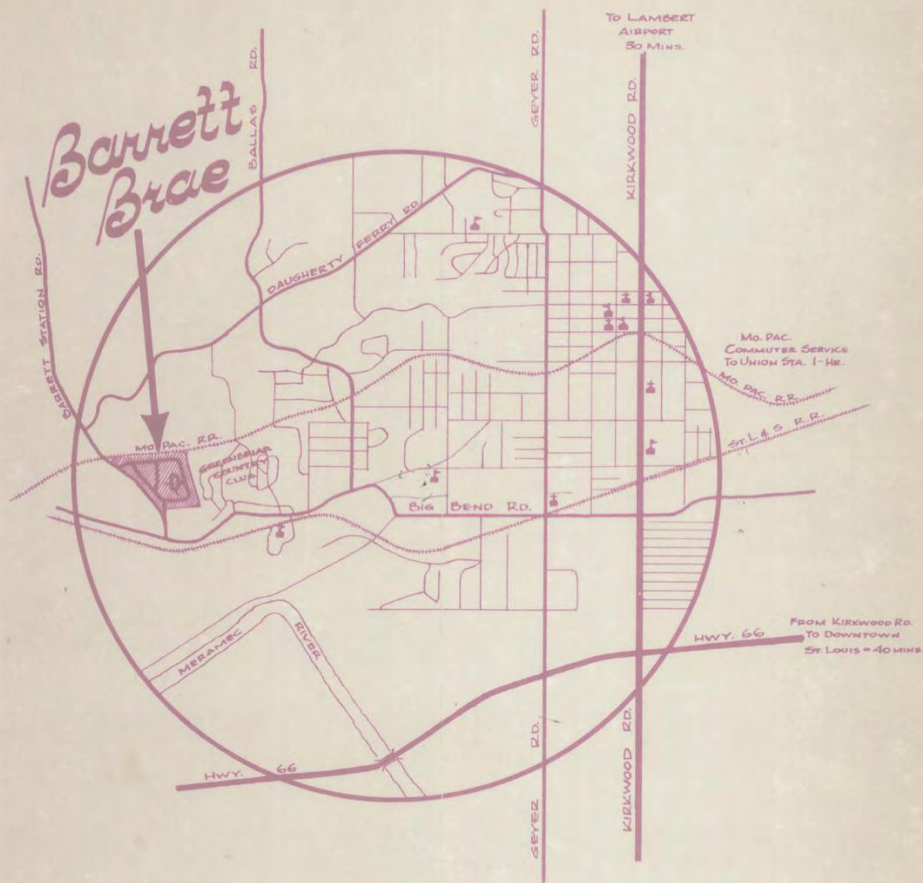
four variations of which are shown here, is currently being displayed in the National Housing Center Exhibition in Washington, D. C. It is also being featured in the October issue of HOUSE & HOME magazine, which is subscribed to by almost every builder and architect in the country.

We have tried, with these different variations, to present a plan to suit every taste. Each of these plans are so set on the lots as to provide the utmost in privacy and attractive patio area.



An Ideal Location

As may be seen from the map below, the near proximity of churches, schools, etc., the easy access to downtown St. Louis, and, for the traveling business man, the availability of the airport, make the location of Barrett Brae ideal for the full enjoyment of suburban living.



Barrett Brae

design
development
construction

by

Fischer & Frichtel, Inc.

8703 St. Charles Rd.

Harrison 7-8640

St. Louis' Most Experienced BUILDERS of CONTEMPORARY HOMES